



Beaconsfield High School



Transition Booklet

Welcome to Beaconsfield High School

The top left image you can see if our entrance gate, and the bottom right image is our exit gate.



This is our main reception



This is Student Welfare



Student Welfare is here when you are unwell. Matron will look after you and care for all of your needs.

You will find Student Welfare in the bottom of the Tower Block

This is the Wellbeing Hub



We have two rooms in our Wellbeing Hub. The right image is our Counselling Room - these sessions can be arranged for you to sit down and speak to the Counsellor about any worries you may have. The left image is where our Wellbeing Mentor, Ms Ball, is based. She runs our interventions, by invite only, such as social skills. She is also a friendly face to talk to if you need to.

You will find the Wellbeing Hub at the bottom of K Block, by the canteen.

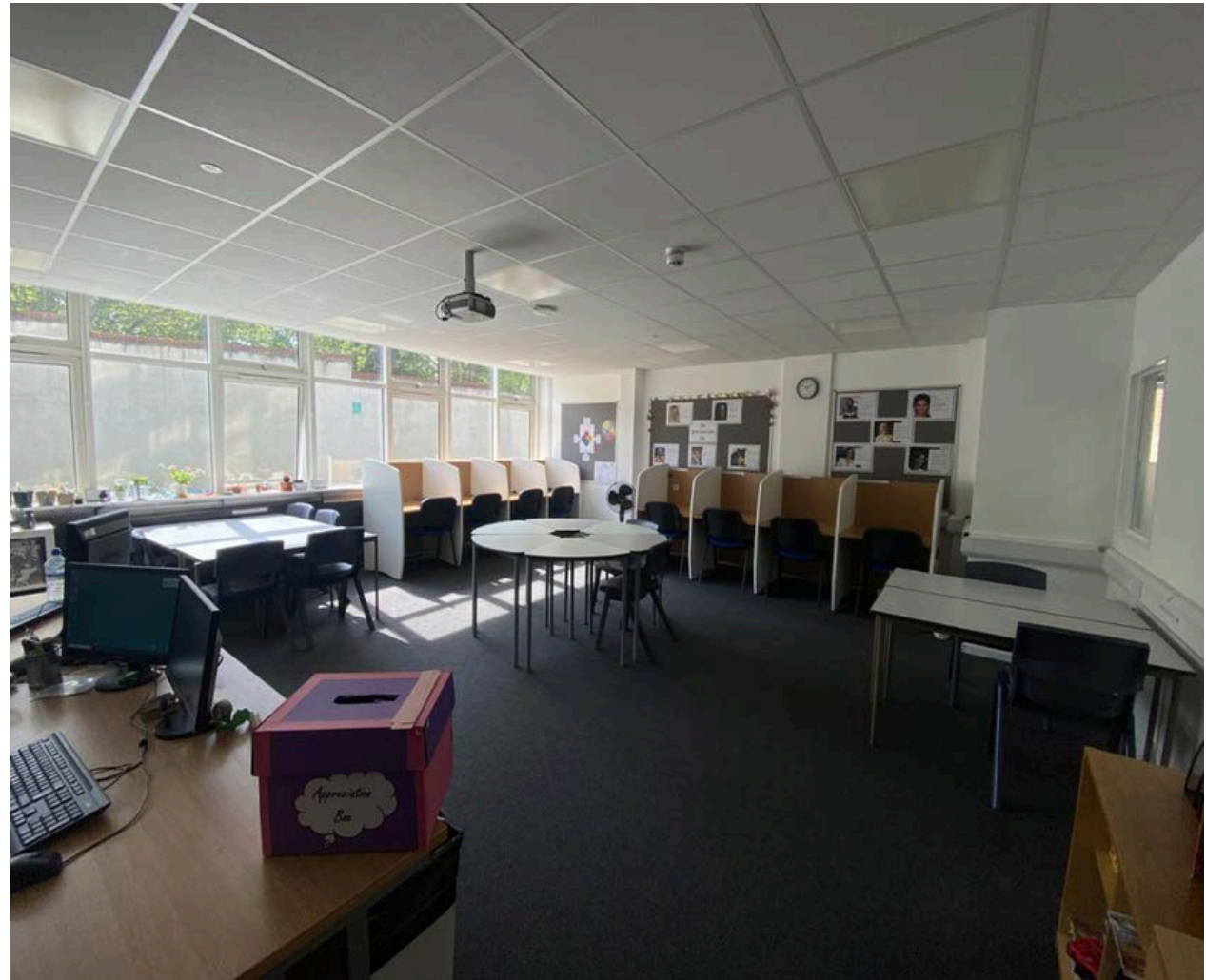
This is the Learning Support Classroom

Our Learning Support department is used for interventions, extra support and there is always someone there to help.

It is a quieter space to work for some of our students when they need it.

Learning Support Assistants and our SENCo can be found here.

You will find this at the bottom of Tower Block



This is the Pastoral Hub

You can come here if you need any help with general information such as a classroom change.

You will also find lost property in this office too.

You will find the Pastoral Hub near Maddy's Garden



This is the Main Hall

This is our Main Hall, where we have most of our assemblies and sometimes some lessons, like drama and dance.

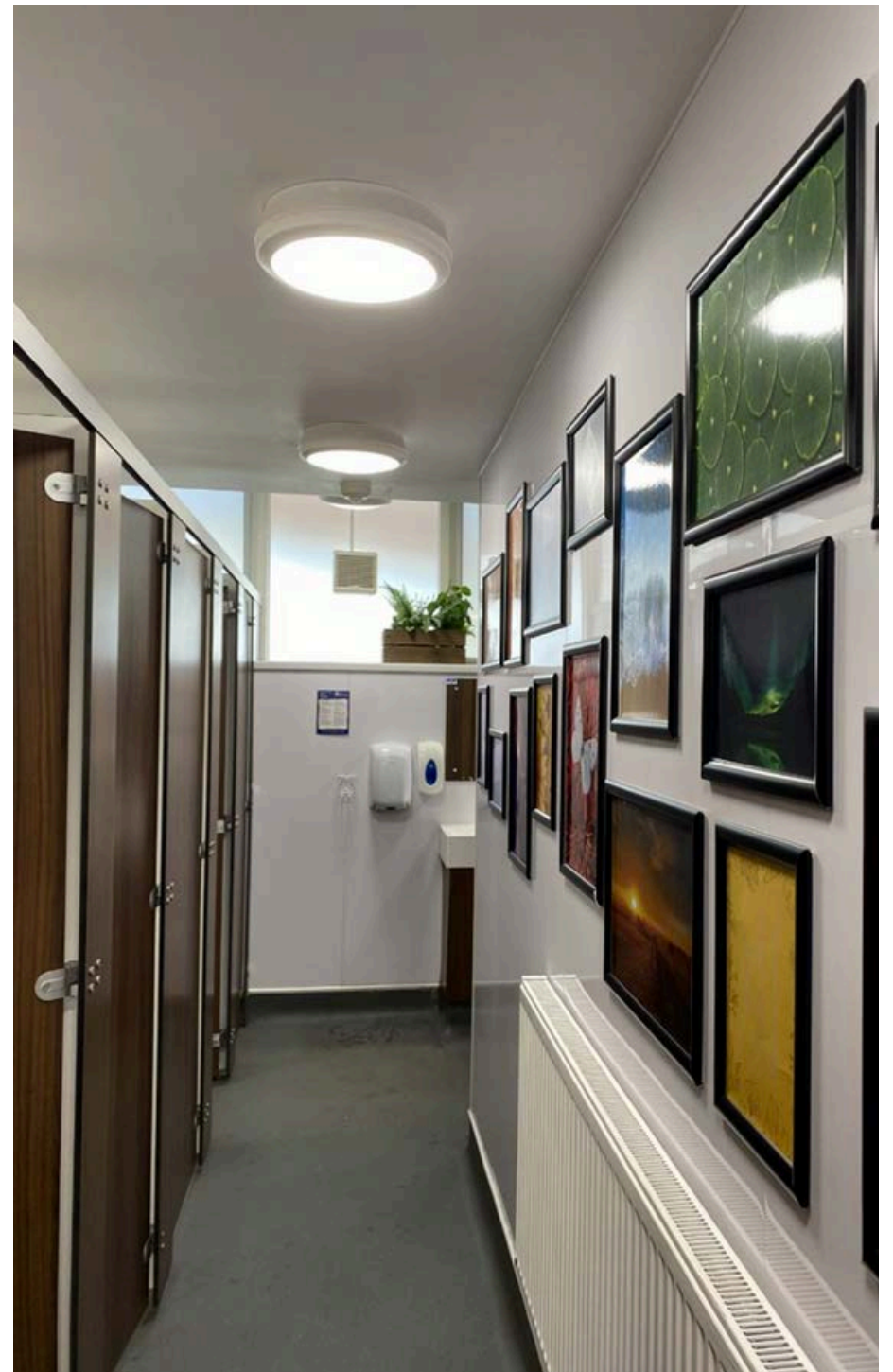
Every year, we have a musical production that the students can audition for. This year, the production was Matilda.



Toilets

This is an example of some of our toilets in the school.

These exact ones can be found at bottom the Tower Block.

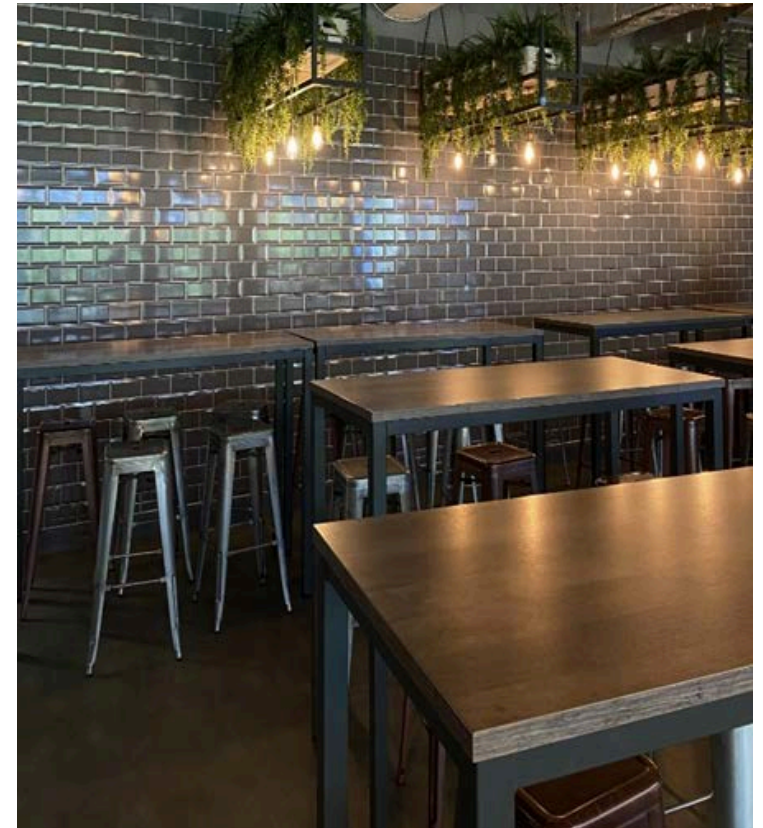


This is the canteen

You can come to the canteen for breaktime and lunchtime.

We have a wide variety of snacks, meals and drinks to choose from.

The image in the corner shows where you will go in and queue for your food.



This is the canteen

You have the option of hot and cold food from the canteen, which you can buy at break and lunch time. You can also buy your breakfast here before school begins.

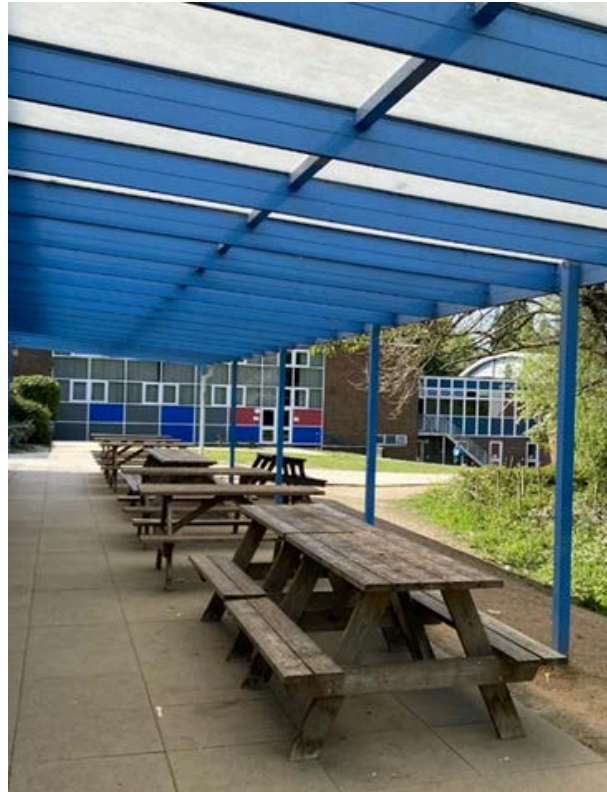
We also have ice creams and a hot drink machine.



You can pay for your food using your fingerprint once you have set up your account. This will be done on your first day. You can't use money in the canteen.

Seating Areas

We have plenty of indoor and sheltered outdoor seating for you and your friends. This seating (pictured below) is located by the canteen.



This area is Maddy's Garden (pictured above). You can find this outside the tower block/main hall.

Our Buildings

All of our buildings are labelled with what subjects will be in that building. For example, this building has our Library, Science Labs and Creative Arts rooms.



Our Buildings - Tower Block

These pictures show a sign for Tower Block and what it looks like from the outside.



Our Buildings - K Block

K Block's sign and what it looks like.



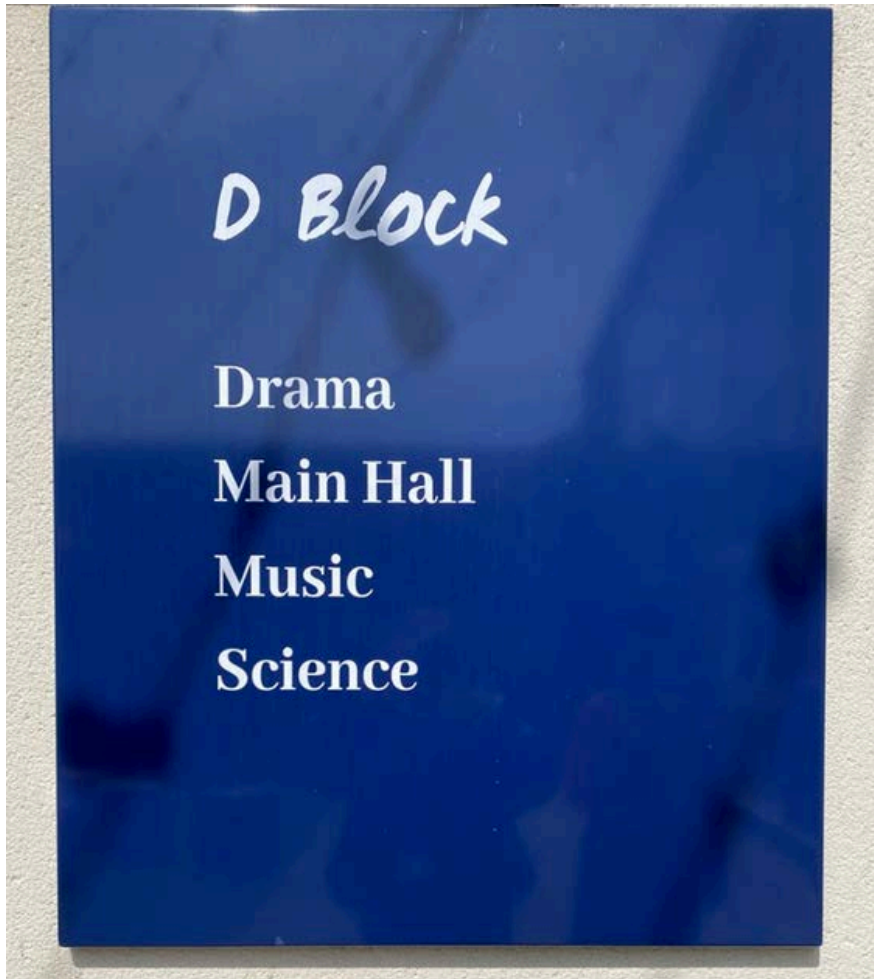
Our Buildings - D Block

D Block's sign and what it looks like.



Our Buildings - D Block

This is another side of D Block, which can be accessed via Maddy's Garden.



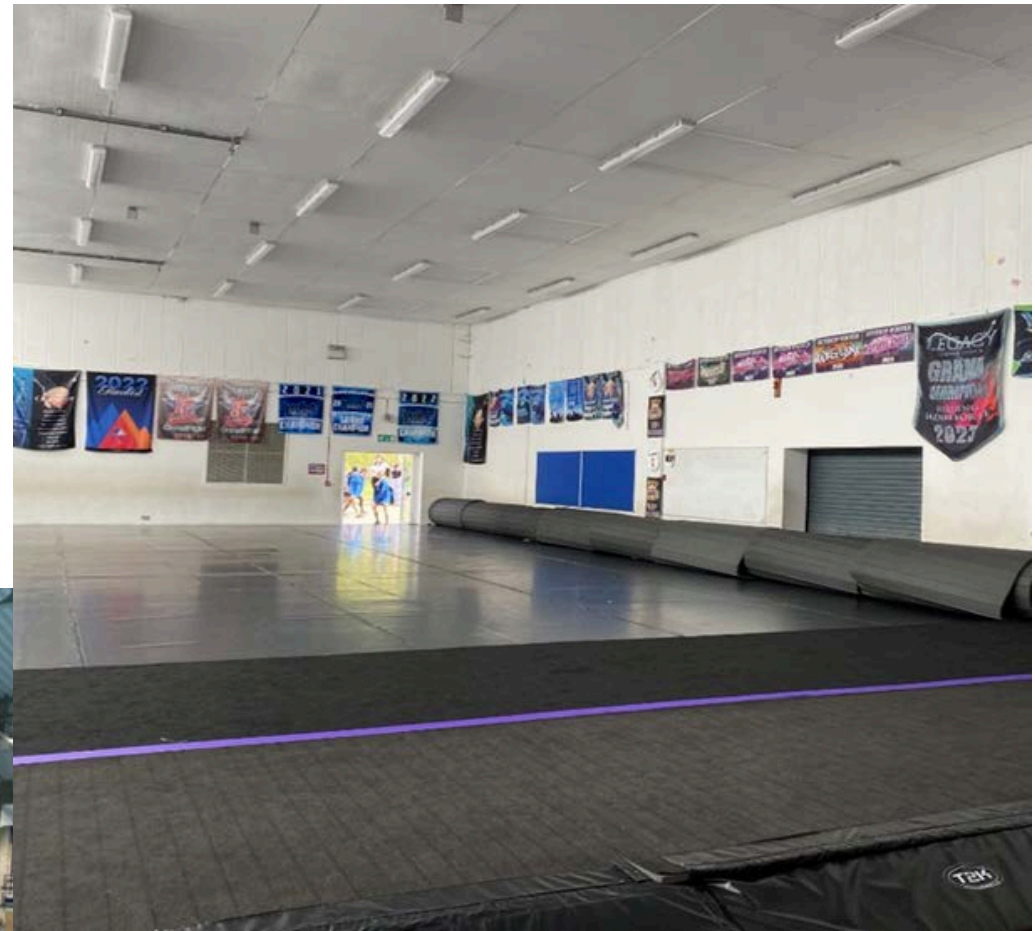
PE

You can have your PE classes outdoors in a variety of locations, ranging from rounders, netball, hockey and many more.



Some other key places...

You will also have some PE lessons inside.
The picture at the bottom is the Sports hall,
and on the right is our Dance Gym



Some other key places...

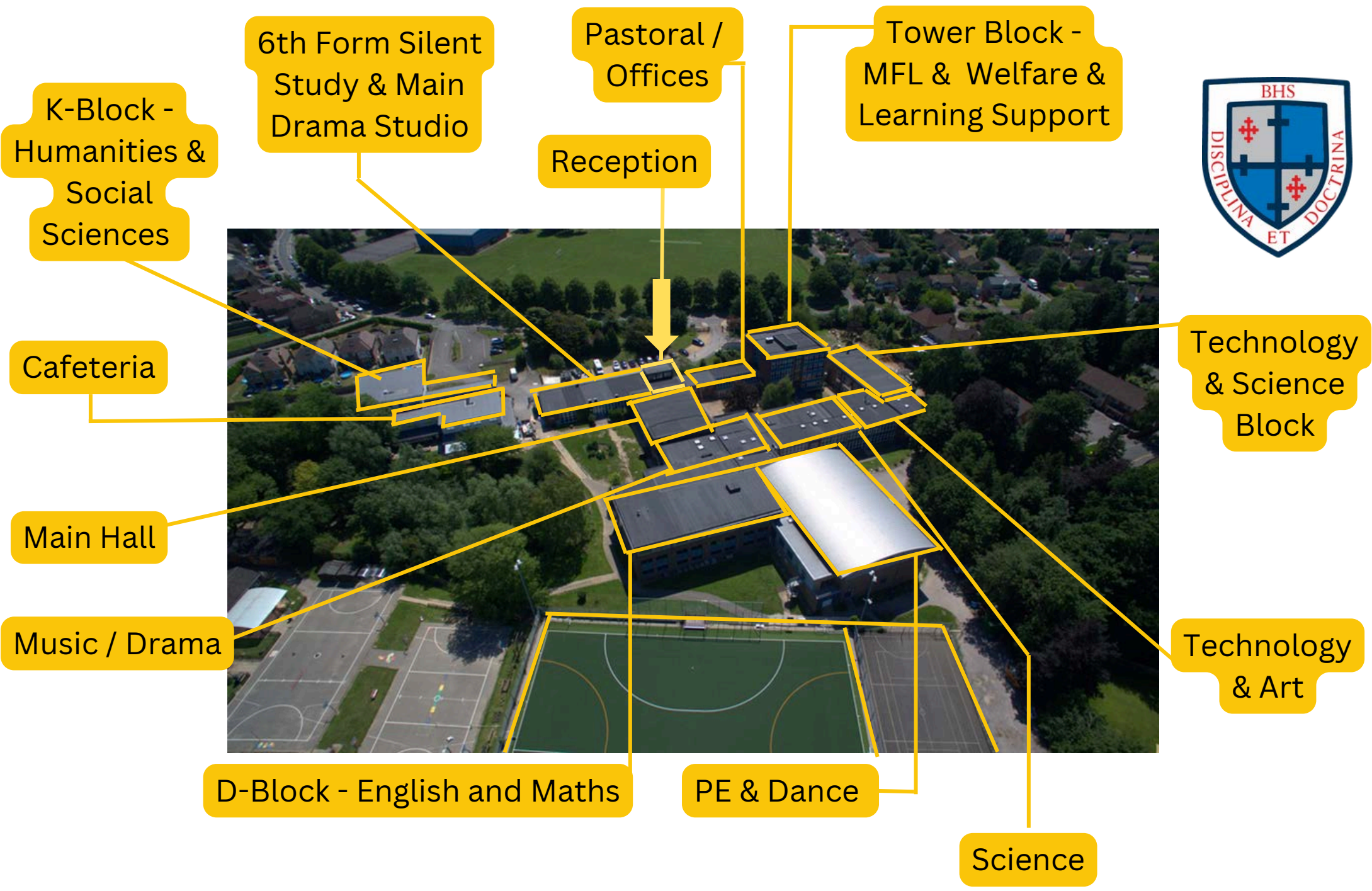
These pictures are outside and inside the changing rooms.



Barney

This is Barney! He is our school dog. He's very friendly and loves going on walks.





K-Block -
Humanities &
Social
Sciences

6th Form Silent
Study & Main
Drama Studio

Pastoral /
Offices

Reception

Tower Block -
MFL & Welfare &
Learning Support

Cafeteria

Main Hall

Music / Drama

D-Block - English and Maths

PE & Dance

Science

Technology
& Science
Block

Technology
& Art



**We hope this booklet has been helpful!
We are really looking forward to
seeing you in September.**

**Year 6 Visual Transition Guide produced by Learning Support Department LSA team -
May 2024**