

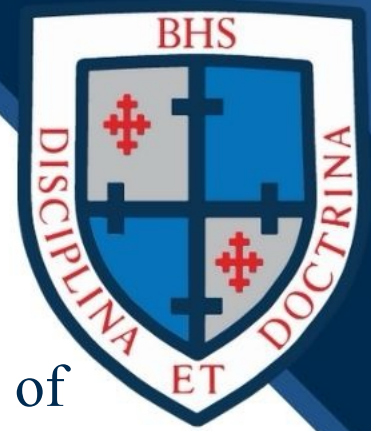


*Welcome to the Duke of
Edinburgh's Award Information
Evening*



BEACONSFIELD
HIGH SCHOOL

Overview



- The Duke of Edinburgh's Award is a voluntary, non-competitive programme of activities for anyone aged 14 – 24.
- Doing The DofE gives young people the opportunity to experience new activities or develop existing skills.
- There are three progressive levels of programmes which when successfully completed lead to a Bronze, Silver or Gold award.
- The DofE was founded by HRH The Duke of Edinburgh in 1956 and currently over 545,000 young people are participating in the award.
- I have 500+ students enrolled with school at the moment.

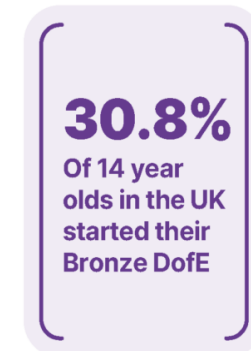
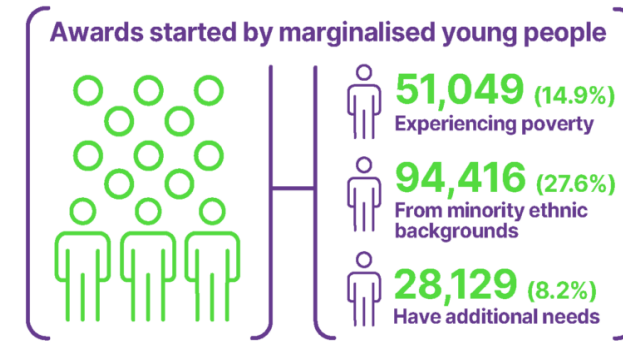
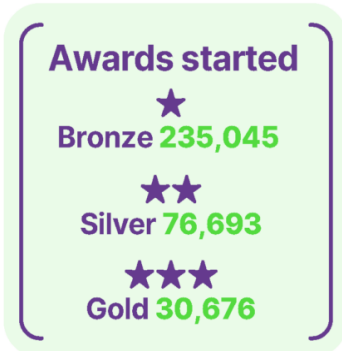
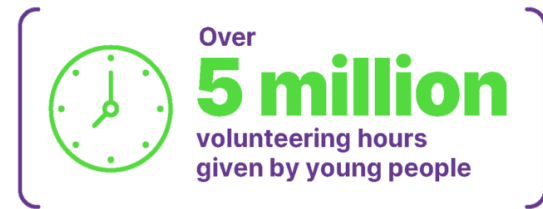
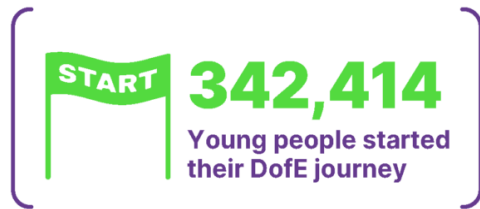


The Duke of Edinburgh's Award in numbers

April 2024 - March 2025

572,802

Young people actively doing their DofE





THE DofE & Employability

August 2014

83%

of DofE participants think that doing their DofE will help them get a job.



58%

are confident they will get the grades they need...
...but nearly half are still worried about finding work.



93%

feel under pressure to demonstrate they can be an 'all-rounder' in the workplace.

Skills participants said they gained through their DofE...



- Team working: 91%
- Communication: 75%
- Problem solving: 59%
- Self-management: 55%
- Positive approach to work: 55%



The Volunteering section came out top in helping participants prepare for the working world.

Participating in DofE activities has given nearly $\frac{1}{4}$ some ideas for their future career.



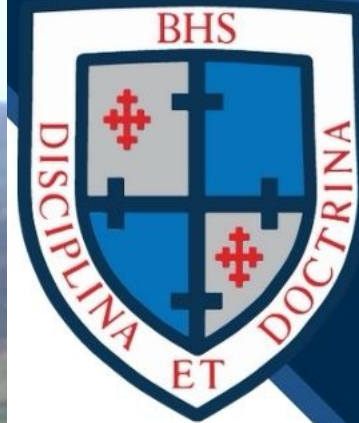
4 Sections - Bronze

- VOLUNTEERING – 6 months
 - Undertaking service to individuals or in the community
 - PHYSICAL – 3 months
 - Improving in an area of sport, dance or fitness
 - SKILLS – 3 months
 - Developing practical and social skills and personal interests
 - EXPEDITION – groups of 4-7 participants
 - Planning, training for and completion of an adventurous journey
- *N.B. One area has to be extended to 6 months usually the volunteering*





Team Building and FUN!!!!



WHAT CAN YOU CHOOSE?



Volunteering

- Helping People i.e. helping in a local primary school
- Community action and raising awareness e.g. youth council
- Coaching, teaching and Leadership e.g. football coaching
- Working with the environment e.g. canal conservation
- Helping a charity or community organisation e.g. working in a charity shop

Physical and Skills

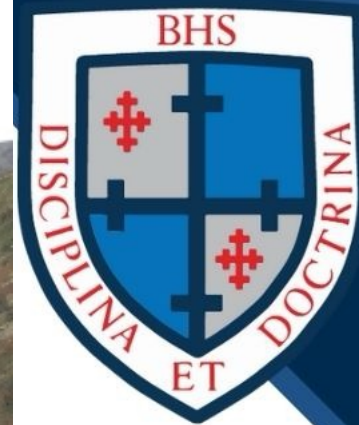
- Team or individual sports
- Dance
- Martial arts
- Creative arts
- Care of animals
- Music
- Media and Communication
- Learning and collecting

The eDofE



- The eDofE is an online logging system where participants and the Leader keep track of progress, add evidence and eventually send off the completed award for certification.
- The participant logs on, decides on the activity, sends a plan for approval then (once approved by the Leader) carries out the activity, uploads photos, diary entries, participation log etc. as evidence. At the end of the time scale, we ask the students to add their reflections on the section as a piece of evidence,
- Once the section is completed and signed off by the Leader The participant scans the assessors report card and adds it to their account, or the assessor will file an e-report and send the section to the Leader for approval and completion.
- The eDofE is how Mr Manners communicates with students and tracks and monitors progress.

The expedition has 4 parts - Training,
Practice and Assessed Expedition.



TRAINING

- First Aid and Emergency Procedures
- An Awareness of Risk and Health and Safety Issues
- Navigation and Route Planning
- Practical Map and Compass Skills
- Camp Craft and Equipment
- Food, Hygiene and Cooking
- Countryside Code
- Observation, Recording and Presentations
- Team Building
- There is an Online package to complete prior to the expedition, which is reinforced on the practice expedition. Students must undertake online training in their own time in preparation for expo.



Enrolment Fee and Fixed Costs



We want to be transparent about our costs so that you know what you are paying for.

- Bronze enrolment fee this year is £104.00. The fee covers our fixed costs.
- As a DofE centre, the school incurs certain fixed costs regardless of the numbers of students participating or the degree to which they participate.
- Our fixed costs are Centre Registration with the Award, Mr Manners' salary, the satellite tracker annual fee, insurance, training, replenishment of equipment and administrative overheads in advance of expeditions. The enrolment fee is non-refundable.
- Our aim is that all these fixed costs are absorbed via the enrolment fee and allocated across all students. It a common model to avoid financial risks to the school.

BHS is a DofE Centre



We are committed to being a DofE centre. Some schools outsource this work to external providers. Our delivery model offers a high value special provision; we are able to offer our students a great deal of ongoing support and encouragement to complete the programme. Our completion rates are one of the highest in Buckinghamshire. It does however mean that our fixed costs may be higher than some other schools. For this reason, it is hard to make comparisons with costs at other schools. BHS makes NO PROFIT from running DofE.

Expeditions



- For several years it has been getting harder to accommodate on expedition the considerable number of students who enrol with us.
- This year, as in previous years, we are partnering with an outside provider to ensure that all students who enrol with us, **and engage in the modules**, can get a place on an expedition.
- There will be 3 expedition groups if numbers dictate (BHS Expo1, BHS Expo 2 and BHS Expo 3) Students will put themselves in groups of 7 for the Expeditions via an online registration document.
- The cost of the expeditions, will be the same, and to give you a very rough idea should be in the region of £275 to £315. We cannot be exact at this stage due to variable costs incurred at the time of booking, fuel prices etc.
- All students who engage with their modules will be invited to go on an expedition. **Students who have not shown any engagement will not qualify for School expeditions.**

How does my child get invited on EXPEDITION?



- The participant must have shown some engagement with the modules. Students complete the modules at different rates but to be invited on expedition they must have **started their modules**.
- Deadlines are clearly communicated to students using eDofE Messaging. Participants need to regularly check communications from Mr Manners via eDofE so that they are fully aware of expectations and deadlines. It is participant responsibility to meet deadlines and expectations communicated via eDofE.
- Students should have activity plans approved (with assessors full name and contact details) by the deadline (1st Feb 2026).
- Communication between Mr Manners and the participant will be primarily via their eDofE account, NOT their school email.
- Students will also need to log evidence in their eDofE account, the DofE App can be used to make it easy to log evidence as text, pictures or video.



BHS Expedition Dates



BHS Expo 1

- Practice expedition will take place on 21st/22nd March 2026
- Assessed expedition will take place on 16th/17th May 2026

BHS Expo 2

- Practice expedition will take place on 25th/26th April 2026
- Assessed expedition will take place on 20th/21st June 2026

BHS Expo 3

- Practice expedition will take place on 9th/10th May 2026
- Assessed expedition will take place on 4th/5th July 2026

Important: No participant can mix and match practice and assessed expeditions

If a student is unable to complete the expedition, we are unable to refund any of the cost.

In the December, following the expedition and completion of the award, we hold a celebration event, the DoE Awards Evening at school and we invite all participants who have fully completed their award.

Common queries...

- Choice of activities – new/existing
- How long do I have to complete the award, and how long do BHS support me?
- Equipment – hiring etc
- Kit list- <https://www.beaconsfieldhigh.school/attachments/download.asp?file=195&type=pdf>
- Supervision/Assessors
- Parental helpers
- Time Scale/Exams
- Health and Safety
- Progression
- All information/letters are on the school website and the School DofE training Videos
- Duke of Edinburgh's Award website – information on everything



ONLY APPLY IF YOU ARE.....

- Able to take on the personal responsibility for your award NOT YOUR PARENTS
- Able to meet deadlines
- Organised and able to manage your time/prioritise
- Willing to work as a team/do your fair share
- Committed to completing all sections
- Able to step up in tough times i.e. on expedition
- Self-motivated and able to use your initiative
- Able to communicate with adults and peers
- Work as part of a team, especially when cold and wet with your pack on at the end of a long day!
- Willing to go the extra mile – literally! The expo involves walking outdoors for a minimum of six hours on each day carrying a substantial backpack. There are fitness considerations to think about. Walking with injuries may worsen pre-existing conditions .





*Gold Expeditions in
Snowdonia and Dartmoor*





Thank you for attending



BEACONSFIELD
HIGH SCHOOL



Any Questions?